

**TOKYU FUDOSAN HOLDINGS**  
**COMPANY PROFILE 2026**

Established  
October 1, 2013

Address  
SHIBUYA SOLASTA, 1-21-1 Dogenzaka,  
Shibuya-ku, Tokyo

Business Descriptions  
Management and administration of the group

Capital  
¥77,562 million (As of March 31, 2026)

Employees  
118 (Consolidated:21,898) (As of March 31, 2025)

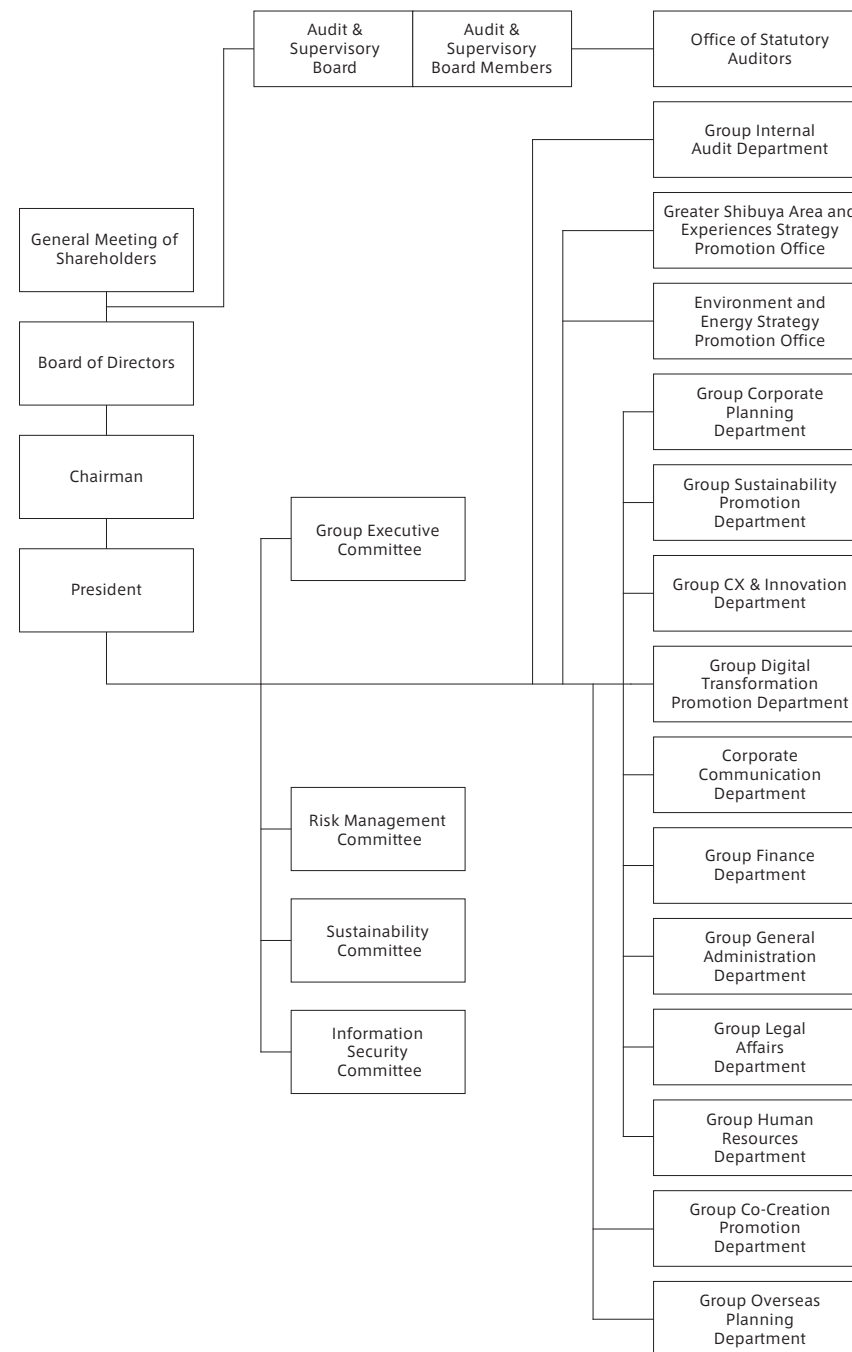
## Executive Board

As of April 1, 2026

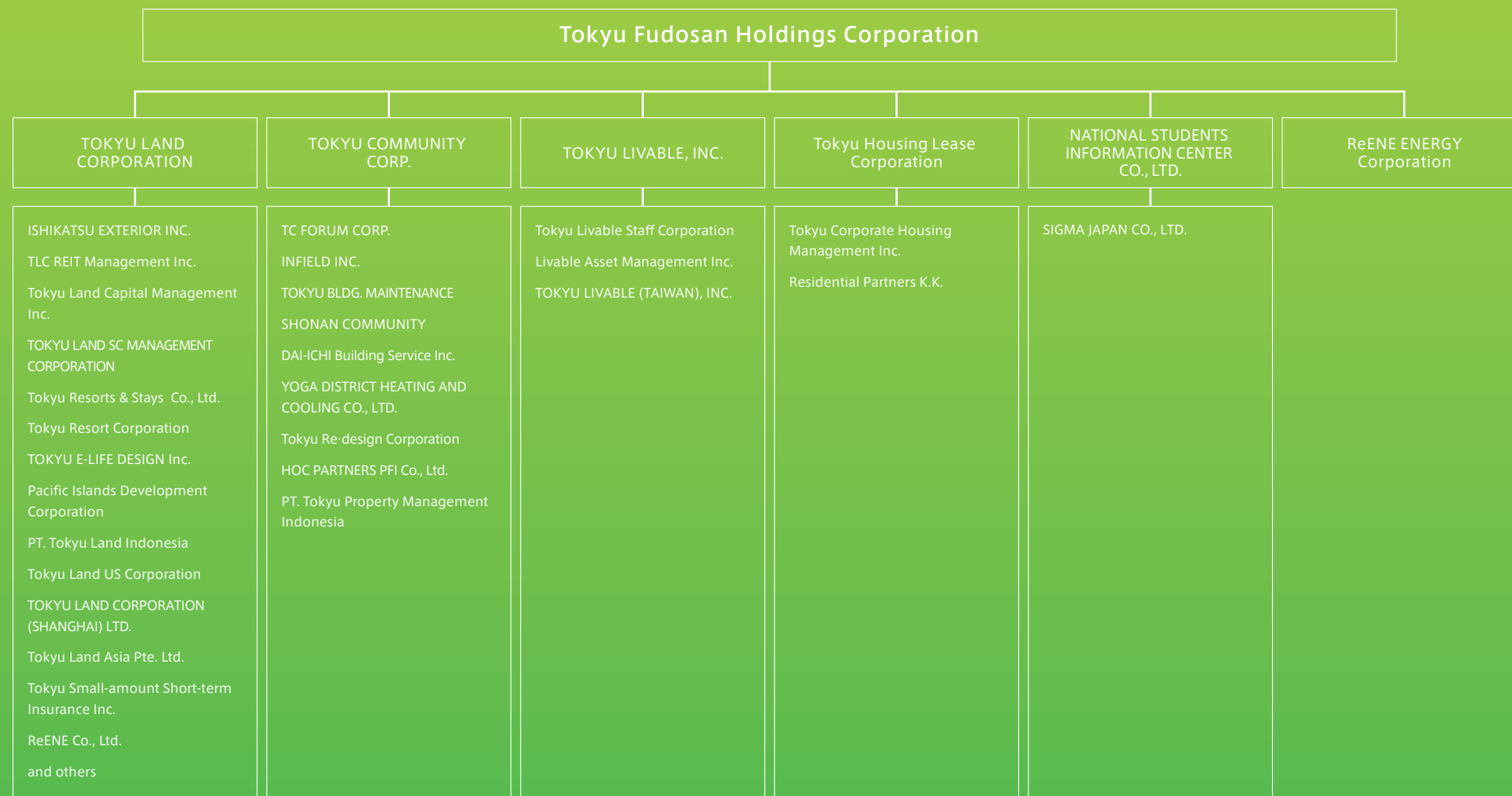
Chairman	Hironori Nishikawa	Operating Officer	Tomoyuki Hayakawa
President & CEO	Hiroaki Hoshino	Operating Officer	Tatsuaki Tanaka
Director & Operating Officer	Shunichi Kobayashi	Operating Officer	Kazuki Yoshino
Director & Operating Officer	Takashi Ikeuchi	Operating Officer	Shunsuke Tomoi
Director & Operating Officer	Takashi Ikeuchi	Operating Officer	Shinichiro Usugi
Director & Operating Officer	Hidetatsu Ikeda	Operating Officer	Shinya Tange
Director	Kiyoshi Kanazashi	Operating Officer	Keisuke Nishida
Director	Shouhei Kimura	Operating Officer	Shigeru Hashimoto
Director	Shouhei Kimura	Operating Officer	Haruo Yamagata
Outside Director	Makoto Kaiami	Operating Officer	Eiji Yamane
Outside Director	Satoshi Miura	Operating Officer	Morio Suzuki
Outside Director	Satoshi Miura	Operating Officer	Yumi Nakano
Outside Director	Tsuguhiko Hoshino	Operating Officer	Takashi Sakamoto
Outside Director	Yumiko Jozuka	Full-time Audit & Supervisory Board Member	Masaoki Kanematsu
Outside Director	Yumiko Jozuka	Full-time Audit & Supervisory Board Member	Akiko Enokido
Outside Director	Akiko Uno	Outside Audit & Supervisory Board Member	Takahiro Nakazawa
Outside Director	Kazumi Maeda	Outside Audit & Supervisory Board Member	Keiko Yoshida

## Organization Chart

As of April 1, 2026



1918	- Established the Den-en Toshi Company and commenced the sale of the Senzoku residential district and the Tamagawadai residential district (now Den-en chofu) in 1923 based on Japan's first garden city plan.	1990	- TLC transfers its entire home sales business operations to TOKYU LIVABLE, INC.	2012	- TOKYU LIVABLE (SHANGHAI), INC. established. - Activia Properties Inc. listed on the Tokyo Stock Exchange. - PT. Tokyu Land Indonesia is established for the purpose of expanding business in Indonesia.
1928	- Meguro-Kamata Railway Co., the predecessor of TOKYU CORPORATION, merges with Den-en Toshi Company.	1995	- Kansai Tokyu Bldg. Maintenance Co., Ltd. established.	2013	- Comforia Residential REIT, Inc. listed on the Tokyo Stock Exchange. - TOKYU COMMUNITY CORP. acquires shares in United Communities Co., Ltd. - TLC, TOKYU COMMUNITY CORP., and TOKYU LIVABLE, INC. delisted. - Tokyu Fudosan Holdings Corporation established.
1953	- TOKYU CORPORATION spins off real estate division that becomes TOKYU LAND CORPORATION (TLC).	1999	- TOKYU LIVABLE, INC., listed on the Second Section of the Tokyo Stock Exchange. (reassigned to the First Section of the TSE in 2001)	2014	- Tokyu Housing Lease Corporation established.
1956	- TLC listed on the Second Section of the Tokyo Stock Exchange. (reassigned to the First Section of TSE in 1961)	2000	- TOKYU COMMUNITY CORP. acquires shares in OSAKA KAIKAN CO., LTD. (trade name changed to TC FORUM CORP. in 2007)	2015	- Kansai Tokyu Bldg. Maintenance Co., Ltd. merges with TOKYU BLDG. MAINTENANCE. (the former taken over by the latter) - Tokyu Fudosan Holdings Corporation headquarters moved to TK Minami-Aoyama Building.
1959	- Construction business assets and trade rights of TLC transferred to newly established Tokyu Construction Co.	2001	- TLC and Tokyu Corporation establish Tokyu Real Estate Investment Management Co., Ltd. - Tokyu Resort Service Co., Ltd. established.	2016	- NATIONAL STUDENTS INFORMATION CENTER CO., LTD. is converted to a wholly owned subsidiary.
1961	- Advertising business of TLC abolished and transferred to newly established TOKYU AGENCY, INC.	2002	- Tokyu Insurance Consulting Corp. established. (a joint venture with other Tokyu Group companies)	2017	- TLC REIT Management Inc. is founded associated with the organizational restructuring of three asset management companies. - Established Tokyu Re-design Corporation to integrate renovation businesses.
1969	- Tokyu Home Service Co. established. (now Tokyu Amenix Corp.)	2003	- TLC establishes E-LIFE DESIGN, Inc. (now TOKYU E-LIFE DESIGN Inc.) - Tokyu Real Estate Investment Trust, Inc. listed on the Tokyo Stock Exchange.	2019	- Tokyu Fudosan Holdings Corporation headquarters moved to SHIBUYA SOLASTA.
1970	- TOKYU COMMUNITY CORP. established.	2007	- TLC establishes Tokyu Land Capital Management Inc. - TOKYU LAND CORPORATION (SHANGHAI) LTD. established.	2020	- Established Tokyu Resorts & Stays Co., Ltd. with the integration of affiliated companies in the hotel and resort business.
1972	- TLC establishes Area Service Co.	2008	- TOKYU COMMUNITY CORP. acquires shares in YOGA DISTRICT HEATING AND COOLING CO., LTD. - Tokyu Home Co. and Tokyu Amenix Corp. merge to form Tokyu Homes Corporation.	2021	- TQConnect Corporation established.
1973	- TLC splits off its design supervision division and transfers it to newly-established Tokyu Architects & Engineers, Inc.	2009	- TLC establishes TOKYU LAND SC MANAGEMENT CORPORATION.	2022	- TFHD digital Inc. established. - Shifted to the prime market due to the change in the market segment reclassification of the Tokyo Stock Exchange.
1978	- Tokyu Resort Corporation established. - Area Service Co. changes its trade name to Tokyu Land Area Service Co.	2010	- TOKYU COMMUNITY CORP. acquires shares in DAI-ICHI Building Service Inc. - Comforia Residential REIT, Inc. established.	2024	- LeaPro. Inc. established.
1980	- TOKYU BLDG. MAINTENANCE established.	2011	- Activia Properties Inc. established.	2025	- ReINN Co., Ltd. established.
1982	- TLC establishes Tokyu Home Corporation. (now Tokyu Homes Corporation)			2026	- ReENE ENERGY Corporation is converted to a wholly owned subsidiary.
1984	- TOKYU LOAN & GUARANTEE COMPANY, LIMITED established. - Tokyu Home & Lifestyle Research Center established.				
1985	- Tokyu Relocation Corp. established. (now Tokyu Stay Co., Ltd.)				



**Tokyu Fudosan Holdings Corporation**

SHIBUYA SOLASTA, 1-21-1 Dogenzaka, Shibuya-ku, Tokyo 150-0043, Japan

Tel: +81-3-6455-1122 (main)

[www.tokyu-fudosan-hd.co.jp/english](http://www.tokyu-fudosan-hd.co.jp/english)